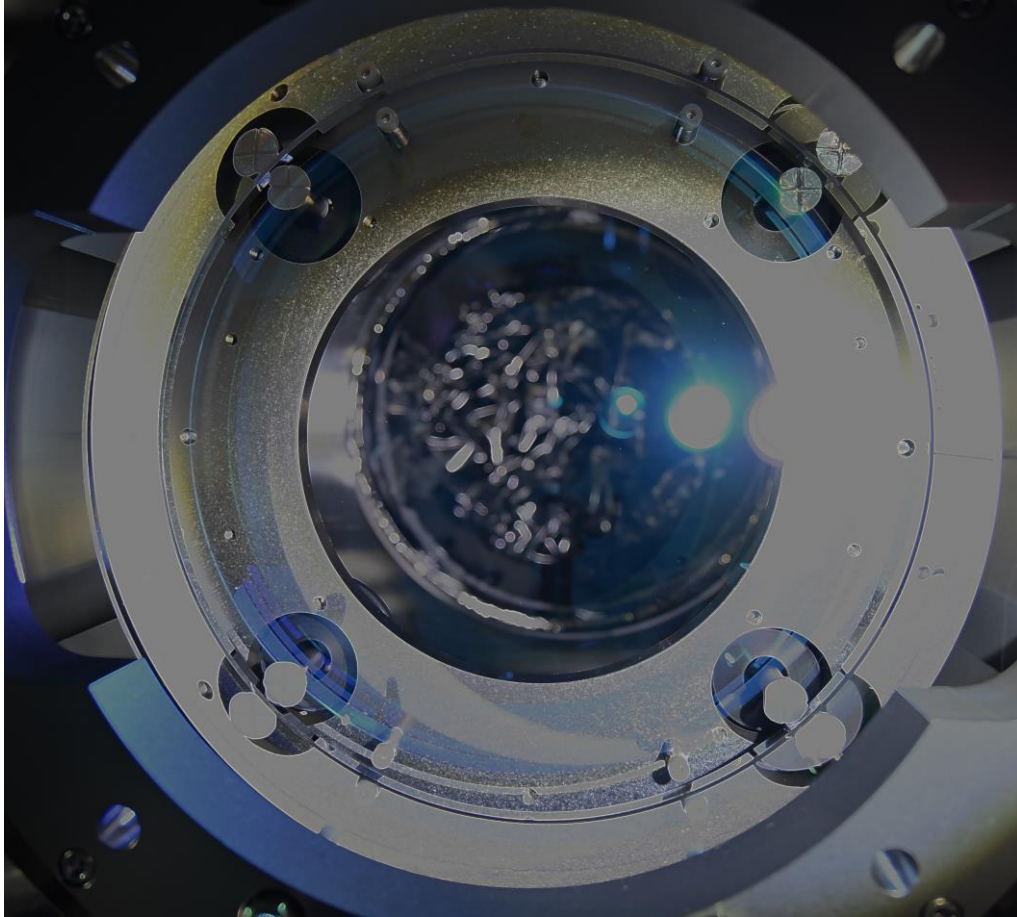


Cleaning of the PRM mirror

2022.5.11~12 Fabian, Hirata, Yasui

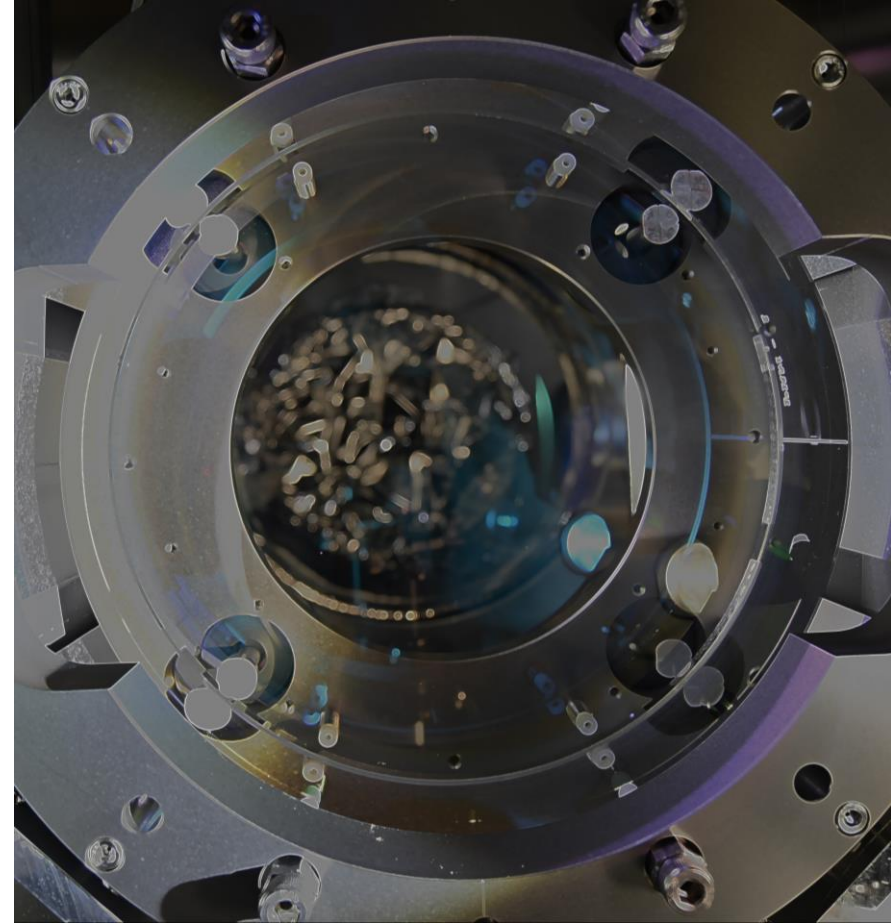
HR side

Before(2022.5.11)



Entire area, including its center has several dust.

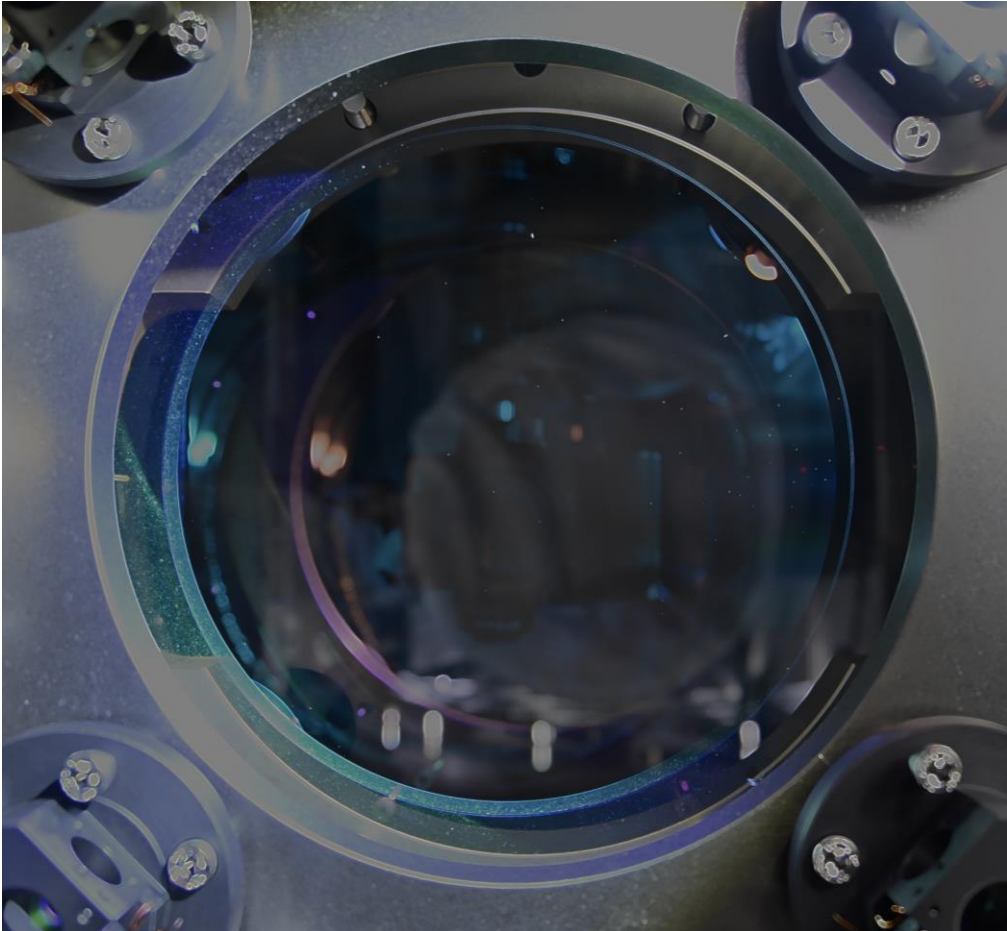
After(2022.5.12)



Almost clean! We could find a few dust but it is not on the center.

AR side

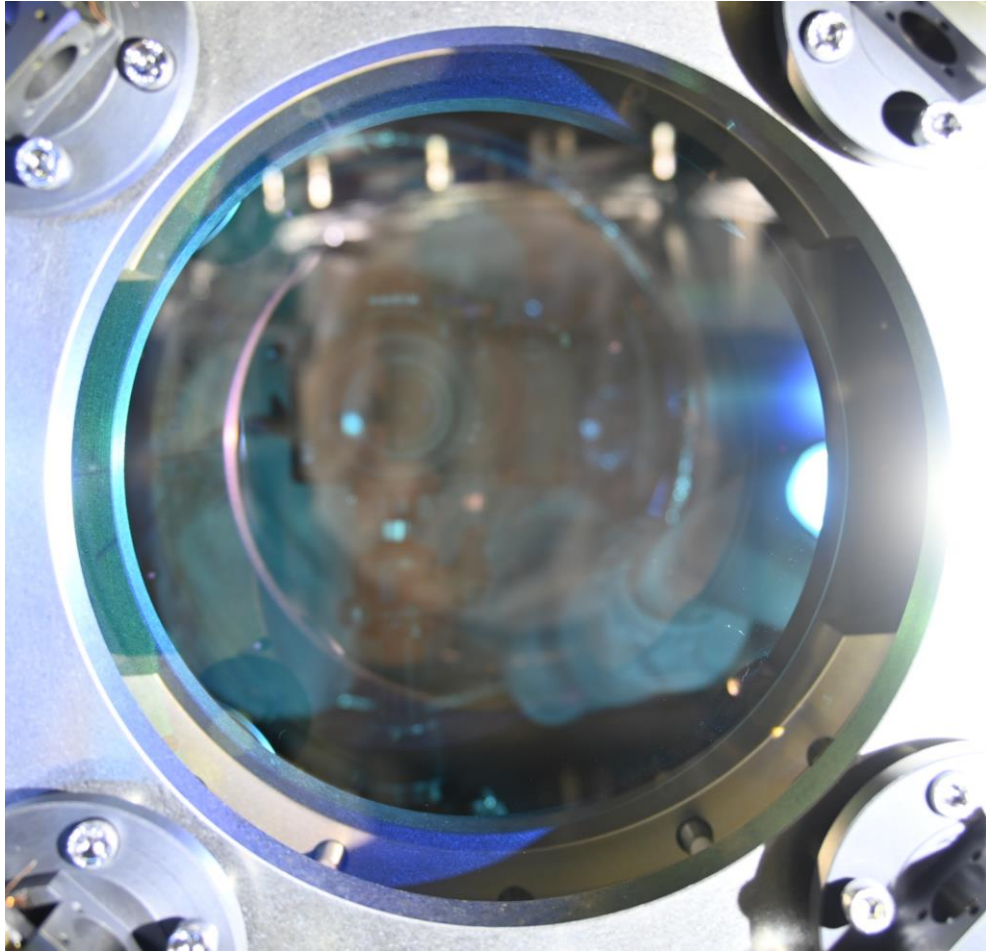
Before(2022.5.11)



There is a lot of dust mainly on its right side, and arc-shaped dirt, maybe FC residue or something, are on its upper side.

AR side

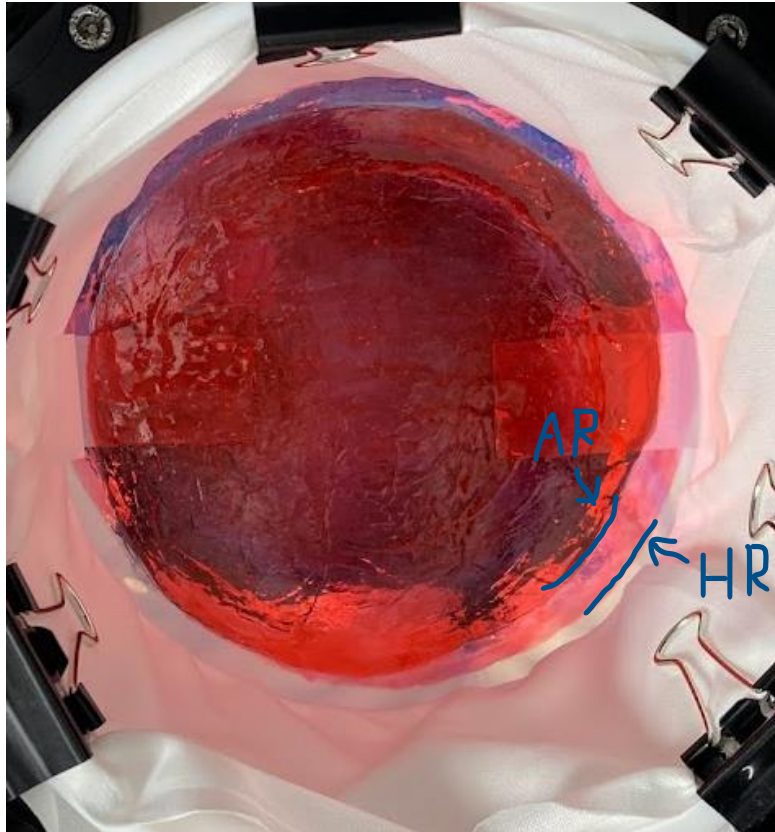
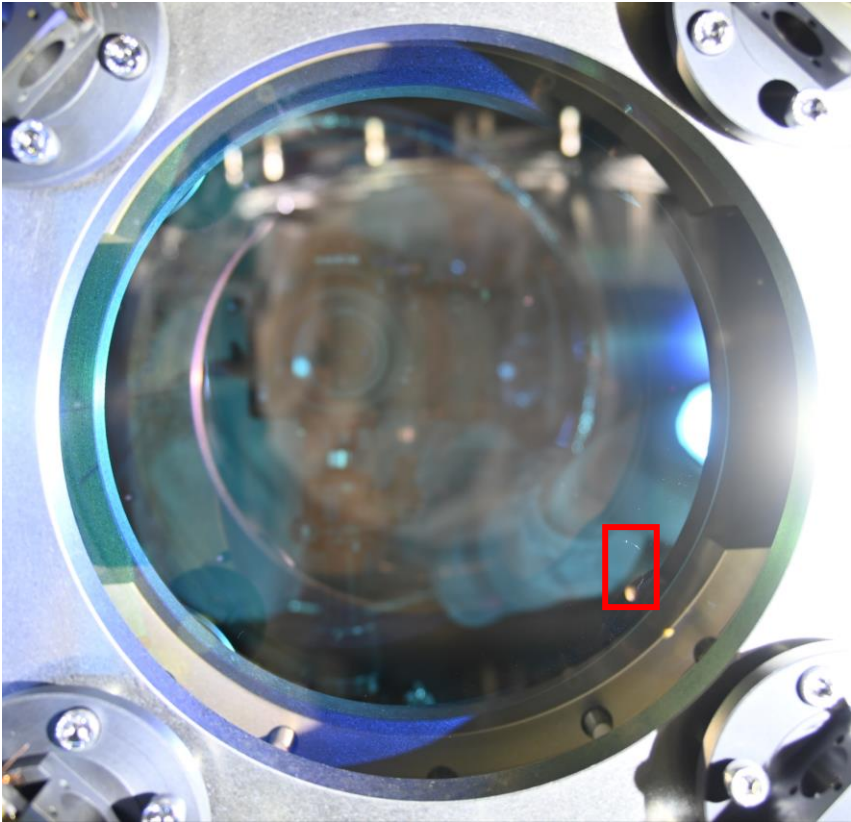
After(2022.5.12)



The center area looks clean. But there is FC residue on its lower right side. And it still has dirt on its upper side and a lot of dust on its lower right that couldn't be found in this picture. Because these are on the out-of-jig range, we couldn't do anything more.

AR side

About FC residue...



There is FC residue on the AR side. This might have been splattered while applying, but we were not aware of this because of HR side FC.

This time, we applied the both sides of FC at the same time. But to avoid this situation, we should start applying the FC on narrower side first.